

MAGICL6000

Chemiluminescence Immunoassay Analyzer



A COMPACT AND INNOVATIVE
CHEMILUMINESCENCE SOLUTION

MAGICL6000

Chemiluminescence
Immunoassay Analyzer

150 T/H

Test time for
the first sample **12** min

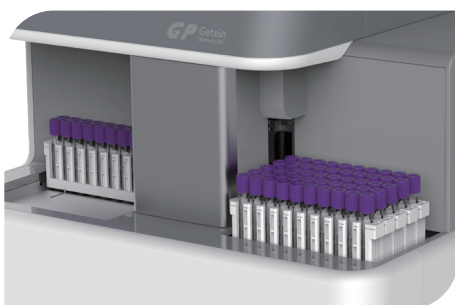
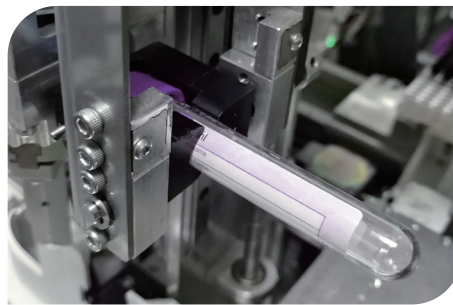


Reagent Unit Unit 1

- 14 reagent positions, supporting on-board loading
- Automatic recognition of reagents by QR code scanning
- 2-8°C refrigeration system, with one-month shelf life of reagents on board
- PE-film puncture technique, preventing reagents evaporation

Sampling Unit Unit 2

- Auto mixing and uncapping of sample tubes
- Adding sample with disposable tips to avoid cross contamination
- Liquid level detection function, adding sample more accurately



Sample Unit Unit 3

- 10 sample racks; 50 positions
- Video recognition system, acquiring real status of sample liquid level and avoiding inaccurate sampling caused by bubbles
- Emergency sample test in priority

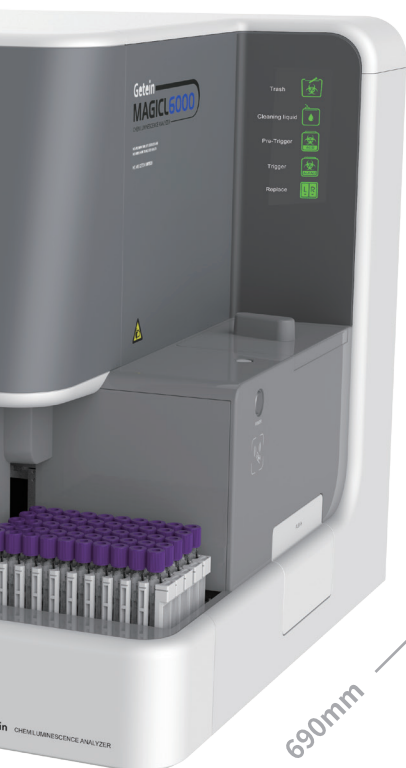
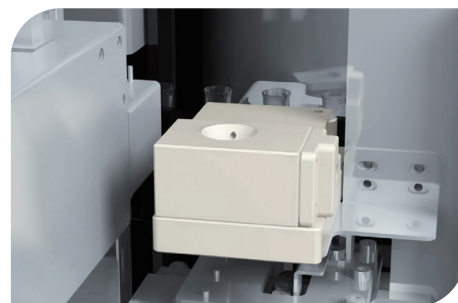


Technical Specifications

- **Test Principle:** Acridinium ester direct chemiluminescence
- **Sample Positions:** 50. Supporting on-board loading
- **Sample Type:** Whole blood/Serum/Plasma/Urine/Fingertip blood
- **Scenarios:** Laboratory/Emergency/ ICU/Outpatient
- **Test Mode:** Batch/Random/STAT
- **Data Transmission:** LIS/HIS connectivity
- **Sensing Functions:** Liquid level detection, bubble detection, probe clogging detection, temperature monitoring, consumables inventory monitoring

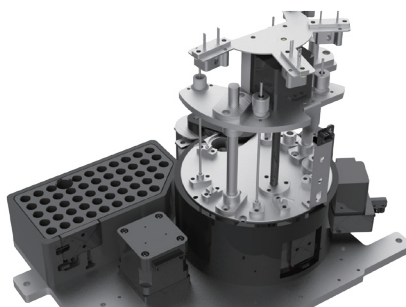
Unit 4 HCT Unit

- HCT testing calculates the serum volume, ensuring the accuracy of whole blood sample test.



660mm

690mm

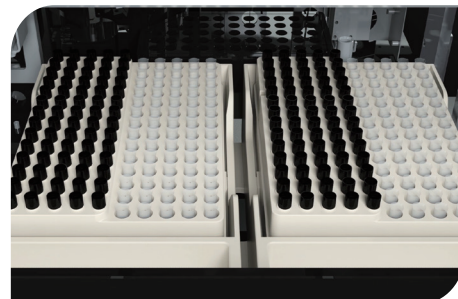


Unit 5 Test Unit

- Combining washing station, test station and incubation station in one unit
- Small size with high throughput
- Unique design of washing station, excluding whole blood factors influence

Unit 6 Consumable Unit

- Integrated dual consumable module
- Continuous consumable change without test pauses for easy operation



Test Items

Items with * are coming soon.

Reproduction/ Fertility

Testosterone	PRL
Estradiol	UE3
Progesterone	HCG+β
LH	AMH
FSH	SHBG
*Free-β-HCG	*PAPP-A
*DHEA-S	

Tumor Markers

Ferritin	CA50
ProGRP	CA125
HE4	CA15-3
SCC	CA19-9
CA72-4	CYFRA21-1
NSE	CA242
fPSA	PG I
AFP	PG II
CEA	G17
tPSA	*AFP-L3

Cardiovascular Markers

hs-cTnI	D-Dimer
hs-cTnT	HbA1c
NT-proBNP	H-FABP
BNP	*Lp-PLA2
Myo	*ST2
CK-MB	

Thyroid Markers

T ₃	TG-Ab
T ₄	TPO-Ab
FT ₃	TG
FT ₄	*Anti-TSHR
TSH	*rT3

Hypertension

Cortisol	*ALD
Renin	*AT- II
*ACTH	*AT- I

Liver Fibrosis

LN	CG
HA	*PIIIP N-P
CIV	

Inflammatory markers

PCT	SAA
IL-6	hs-CRP+CRP

Thrombus

*TAT	*tPAIC
*FDP	*TM
*PIC	

Infectious Disease

HCV	HBeAg
TP	Anti-HBe
HBsAg	Anti-HBc
Anti-HBs	HIV

Torch

*Toxo IgG	*CMV IgM
*Toxo IgM	*HSV-1 IgG
*Rubella IgG	*HSV-1 IgM
*Rubella IgM	*HSV-2 IgG
*CMV IgG	*HSV-2 IgM

Diabetes Care

C-Peptide
Insulin
IAA

Bone Metabolism

Osteocalcin
25-OH-VD
PTH

Brain Damage

NSE
*S100

Down's Syndrome

UE3
HCG+β
AFP

Others

GH
Cortisol
IgE
*NGAL

